

NPR College of Engineering & Technology

NPR Nagar, Natham, Dindigul - 624401, Tamil Nadu, India.
Approved by AICTE, New Delhi & Affiliated to Anna University, Chennai.

An ISO 9001:2015 Certified Institution.

Phone No: 04544- 246 500, 246501, 246502.

Website : www.nprcolleges.org, www.nprcet.org, Email: nprcetprincipal@nprcolleges.org



Students Feedback on Curriculum Info – Feedback Analysis Report

Academic Year: 2021-2022

Report Date:14/02/2022

From:10/01/2022

To:11/02/2022

S.No	Question's	Excellent	Very Good	Good	Fair	Poor	Total Weightage	Percentage	3-Scale Weightage
1	How do you rate the sequence of the Courses that you have studied are in sequence to what you have studied in the previous semester?	365	129	95	26	15	2693	85.49	2.56
2	How do you rate the syllabus of the courses that you have studied in relation to the competencies expected out of the course?	328	152	120	22	8	2660	84.44	2.53
3	How do you rate the relevance of the units in Syllabus relevant to the course?	290	190	115	26	9	2616	83.05	2.49
4	How do you rate the sequence of the units in the course?	220	240	124	38	8	2516	79.87	2.40
5	How do you rate the allocation of the credits to the courses?	215	230	130	40	15	2480	78.73	2.36
6	How do you rate the distribution of the contact hours among the course components (L-T-P)?	242	206	127	35	20	2505	79.52	2.39
7	How do you rate the offering of the electives in terms of their relevance to the specialization streams?	290	150	110	64	16	2524	80.13	2.40





NPR College of Engineering & Technology

NPR Nagar, Natham, Dindigul - 624401, Tamil Nadu, India.
Approved by AICTE, New Delhi & Affiliated to Anna University, Chennai.

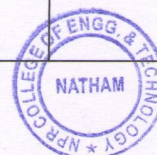
An ISO 9001:2015 Certified Institution.

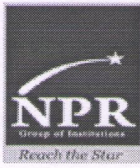
Phone No: 04544- 246 500, 246501, 246502.

Website : www.nprcolleges.org, www.nprcet.org, Email: nprcetprincipal@nprcolleges.org



8	How do you rate the electives offered in relation to the Technological advancements?	220	180	163	47	20	2423	76.92	2.31
9	How do you rate the relevance of the Text Books and reference books by their International recognition to the Courses?	250	176	165	29	10	2517	79.90	2.40
10	Rate the Size of syllabus in terms of the load on the student	210	196	174	37	13	2443	77.56	2.33
11	Rate the courses in terms of extra learning or self learning considering the design of the courses	186	214	126	89	15	2357	74.83	2.24
12	Rate the courses in terms of sequence of offering considering whether the preceding courses have been covered	240	190	128	65	7	2481	78.76	2.36
13	How do you Rate the loading of the courses in a semester?	239	203	130	41	17	2496	79.24	2.38
14	How do you rate the evaluation scheme designed for each of the course?	225	219	136	34	16	2493	79.14	2.37
15	How do you rate the objectives stated for each of the course?	220	199	165	29	17	2466	78.29	2.35





NPR College of Engineering & Technology

NPR Nagar, Natham, Dindigul - 624401, Tamil Nadu, India.
Approved by AICTE, New Delhi & Affiliated to Anna University, Chennai.

An ISO 9001:2015 Certified Institution.

Phone No: 04544- 246 500, 246501, 246502.

Website : www.nprcolleges.org, www.nprcet.org, Email: nprcetprincipal@nprcolleges.org



16	How do you rate competencies expected out of the course?	230	185	145	55	15	2450	77.78	2.33
17	How do you rate the composition of the courses in terms of Basic science, Engineering science, Humanities, Discipline core, discipline elective, open elective, project etc.?	245	186	104	67	28	2443	77.56	2.33
18	How do you rate the experiments in relation to the real life Applications?	210	175	140	80	25	2355	74.76	2.24
19	How do you rate the domain used for designing the experiments for the LAB components?	215	176	129	65	45	2341	74.32	2.23
20	How do you rate the courses having LAB components?	239	174	88	89	40	2373	75.33	2.26
AVERAGE SCORE							2482	78.78	2.36



Dr. J.SUNDARARAJAN,

B.E., M.Tech., Ph.D.,

Principal

N.P.R. College of Engineering & Technology
Natham, Dindigul (Dt) - 624 401.

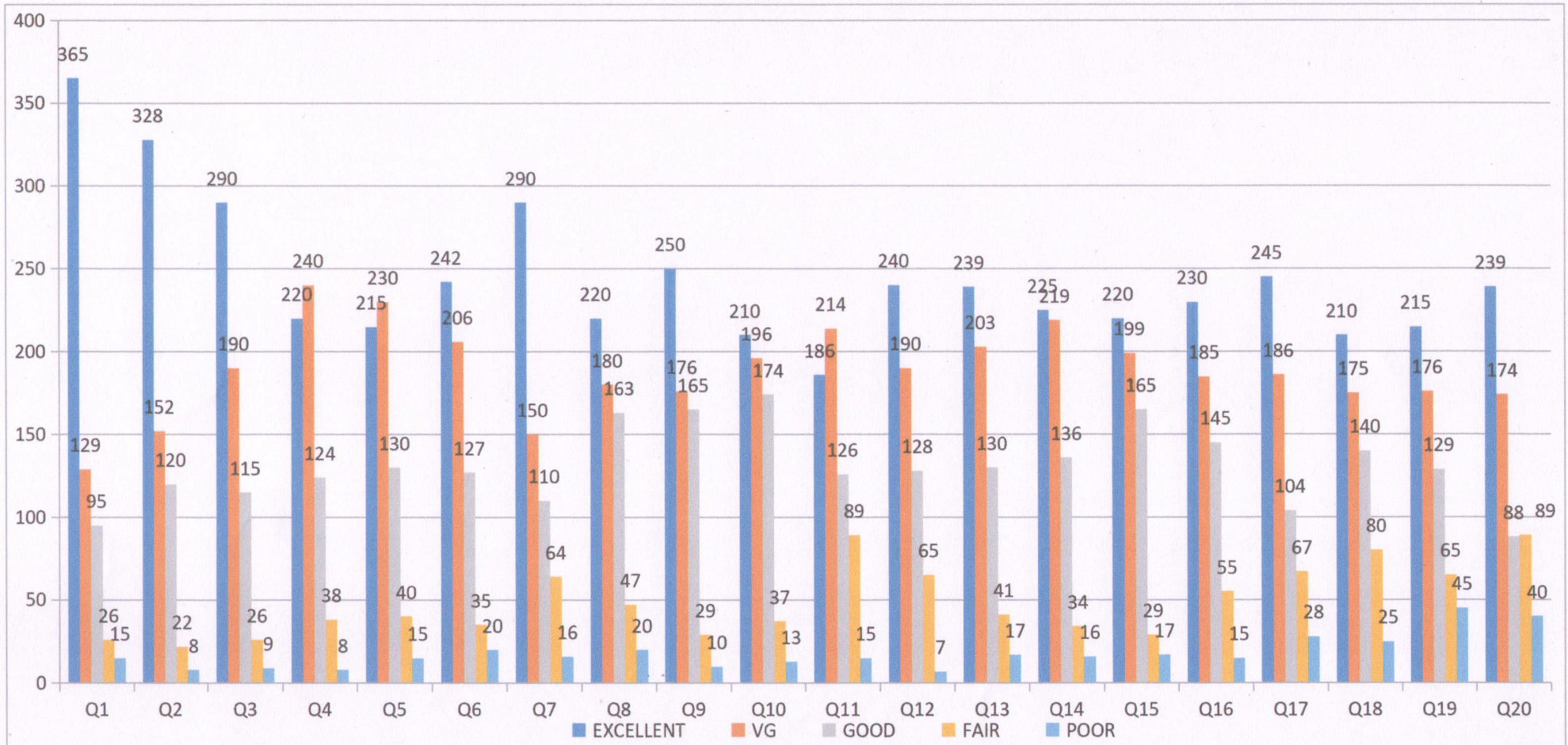


NPR College of Engineering & Technology

NPR Nagar, Natham, Dindigul - 624401, Tamil Nadu, India.
 Approved by AICTE, New Delhi & Affiliated to Anna University, Chennai.
 An ISO 9001:2015 Certified Institution.
 Phone No: 04544- 246 500, 246501, 246502.
 Website : www.nprcolleges.org, www.nprcet.org, Email: nprcetprincipal@nprcolleges.org



STUDENTS FEEDBACK



Students Feedback from 10/01/2022 to 11/02/2022



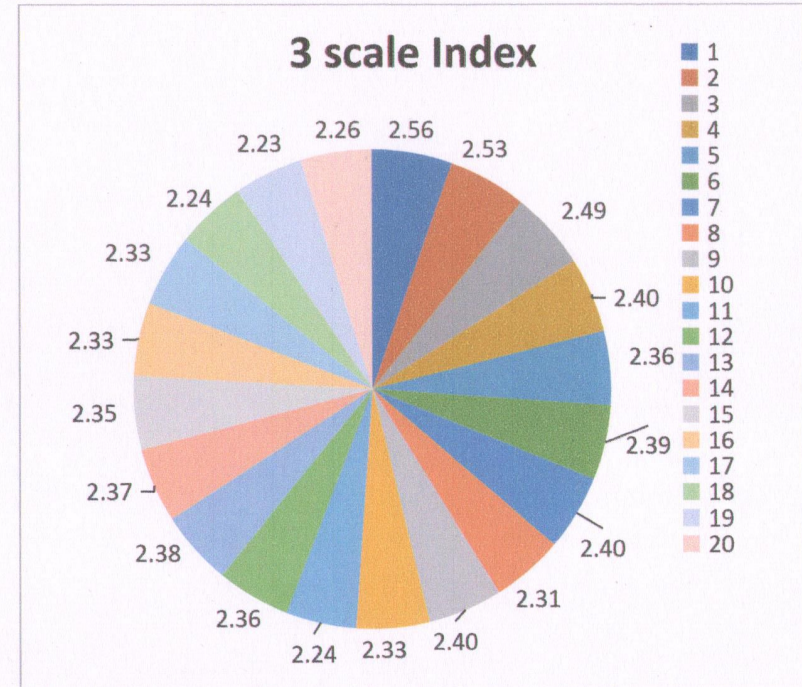
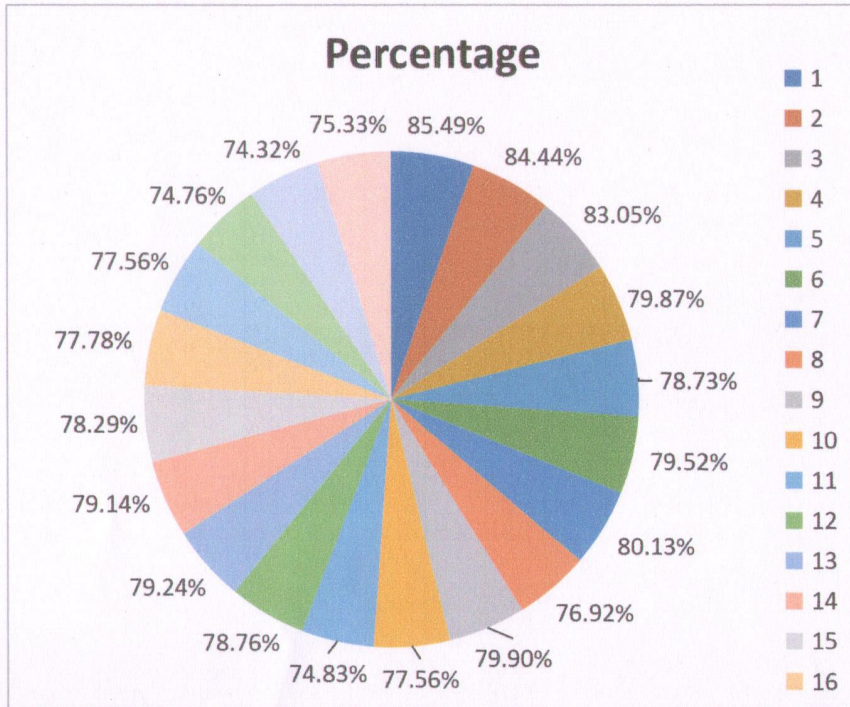


NPR College of Engineering & Technology

NPR Nagar, Natham, Dindigul - 624401, Tamil Nadu, India.
 Approved by AICTE, New Delhi & Affiliated to Anna University, Chennai.
 An ISO 9001:2015 Certified Institution.
 Phone No: 04544- 246 500, 246501, 246502.
 Website : www.nprcolleges.org, www.nprcet.org, Email:nprcetprincipal@nprcolleges.org



STUDENTS FEEDBACK



Students Feedback from 10/01/2022 to 11/02/2022

