

# NPR College of Engineering & Technology

NPR Nagar, Natham, Dindigul - 624401, Tamil Nadu, India.  
Approved by AICTE, New Delhi & Affiliated to Anna University, Chennai.  
An ISO 9001:2015 Certified Institution.  
Phone No: 04544- 246 500, 246501, 246502.

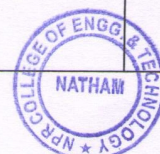


Website : [www.nprcolleges.org](http://www.nprcolleges.org), [www.nprcet.org](http://www.nprcet.org), Email: [nprcetprincipal@nprcolleges.org](mailto:nprcetprincipal@nprcolleges.org)

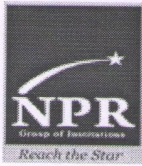
## Alumni Feedback on Curriculum Info – Feedback Analysis Report

Academic Year: 2021-2022 Report Date:14/02/2022 From:10/01/2022 To:11/02/2022

S.No	Question's	Excellent	Very Good	Good	Fair	Poor	Total Weightage	Percentage	3-Scale Weightage
1	How do you rate relevance of the courses in relation to the program?	198	82	63	7	0	1521	86.91	2.61
2	How do you rate the sequence of the courses included into the programs?	190	95	55	9	1	1514	86.51	2.60
3	How do you rate the competencies in relation to the course content?	165	103	75	7	0	1476	84.34	2.53
4	How do rate the sequence of the topics in the units?	140	113	88	9	0	1434	81.94	2.46
5	Rate the offering of the in relation to the specialization streams?	121	130	90	9	0	1413	80.74	2.42
6	How do you rate the offering of the electives in relation to the Technological advancements?	139	120	74	17	0	1431	81.77	2.45
7	How do you rate the courses which are skills related suiting to the Industry included into the programs?	110	118	91	30	1	1356	77.49	2.32







# NPR College of Engineering & Technology

NPR Nagar, Natham, Dindigul - 624401, Tamil Nadu, India.  
Approved by AICTE, New Delhi & Affiliated to Anna University, Chennai.

An ISO 9001:2015 Certified Institution.

Phone No: 04544- 246 500, 246501, 246502.

Website : [www.nprcolleges.org](http://www.nprcolleges.org), [www.nprcet.org](http://www.nprcet.org), Email: [nprcetprincipal@nprcolleges.org](mailto:nprcetprincipal@nprcolleges.org)



8	How do you rate the domain used for designing the experiments in terms of the suitability of the Tools to the domain?	115	109	89	35	2	1350	77.14	2.31
9	How do you rate the experiments in terms of their relevance to the real life application?	113	105	96	34	2	1343	76.74	2.30
10	How do you rate the courses that you have learnt in relation to your current Job?	166	115	57	12	0	1485	84.86	2.55
<b>AVERAGE SCORE</b>							<b>1432.30</b>	<b>81.85</b>	<b>2.46</b>



**Dr. J.SUNDARARAJAN,**  
B.E., M.Tech., Ph.D.,  
Principal  
N.P.R. College of Engineering & Technology  
Natham, Dindigul (Dt) - 624 401.





# NPR College of Engineering & Technology

NPR Nagar, Natham, Dindigul - 624401, Tamil Nadu, India.

Approved by AICTE, New Delhi & Affiliated to Anna University, Chennai.

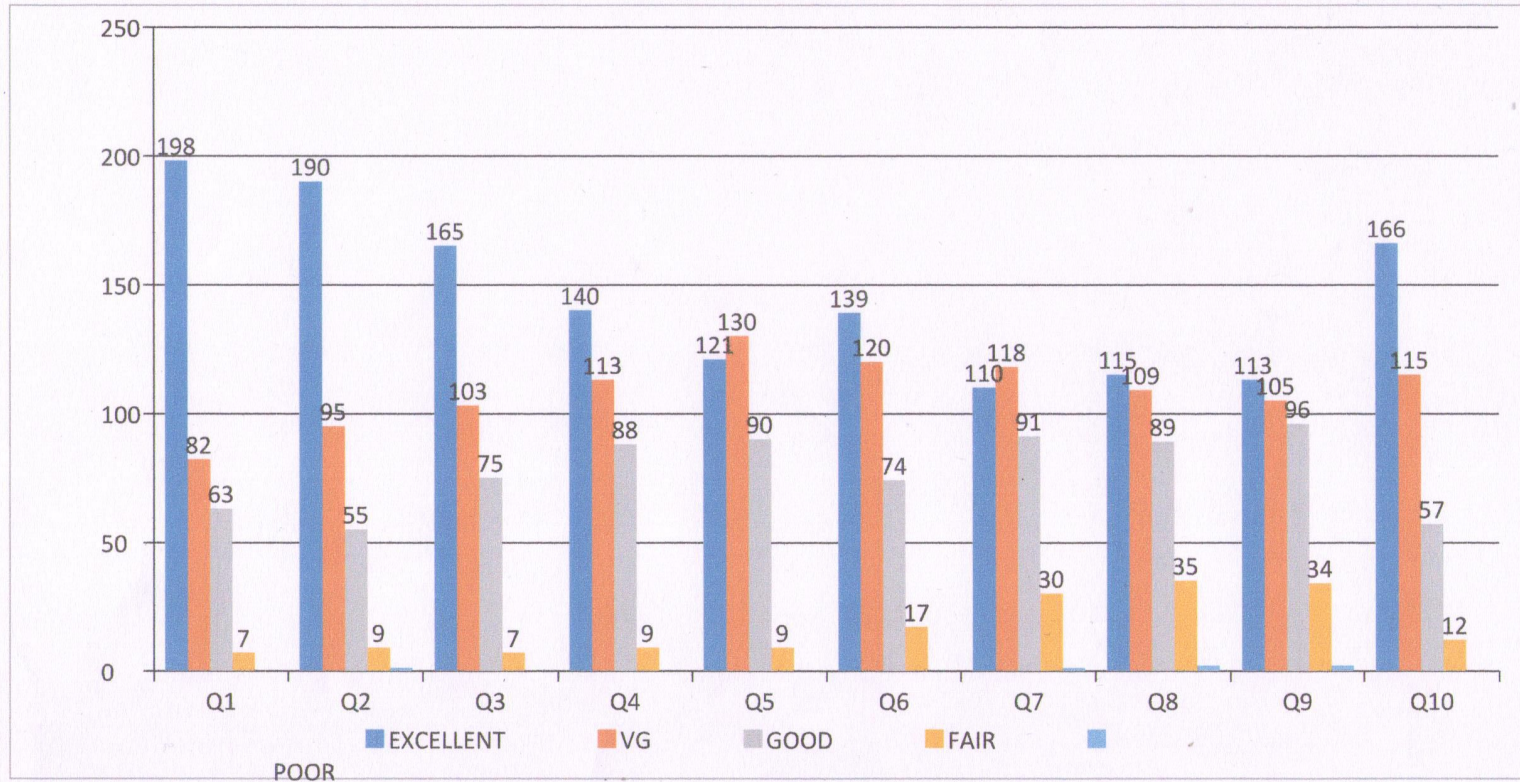
An ISO 9001:2015 Certified Institution.

Phone No: 04544- 246 500, 246501, 246502.

Website : [www.nprcolleges.org](http://www.nprcolleges.org), [www.nprcet.org](http://www.nprcet.org), Email: [nprcetprincipal@nprcolleges.org](mailto:nprcetprincipal@nprcolleges.org)



## ALUMNI FEEDBACK



Alumni Feedback From 10/01/2022 To 11/02/2022







# NPR College of Engineering & Technology

NPR Nagar, Natham, Dindigul - 624401, Tamil Nadu, India.

Approved by AICTE, New Delhi & Affiliated to Anna University, Chennai.

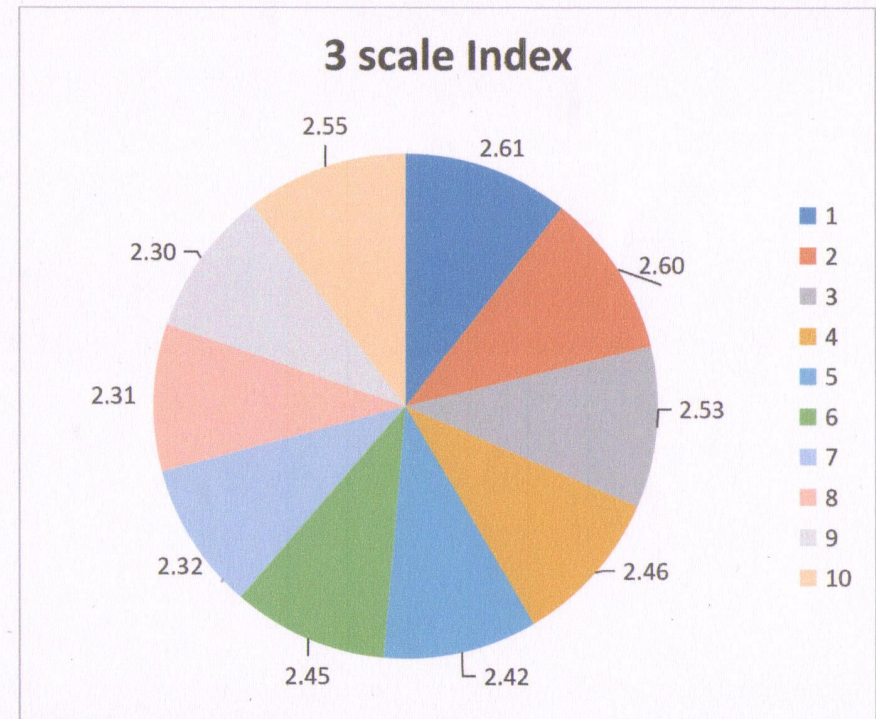
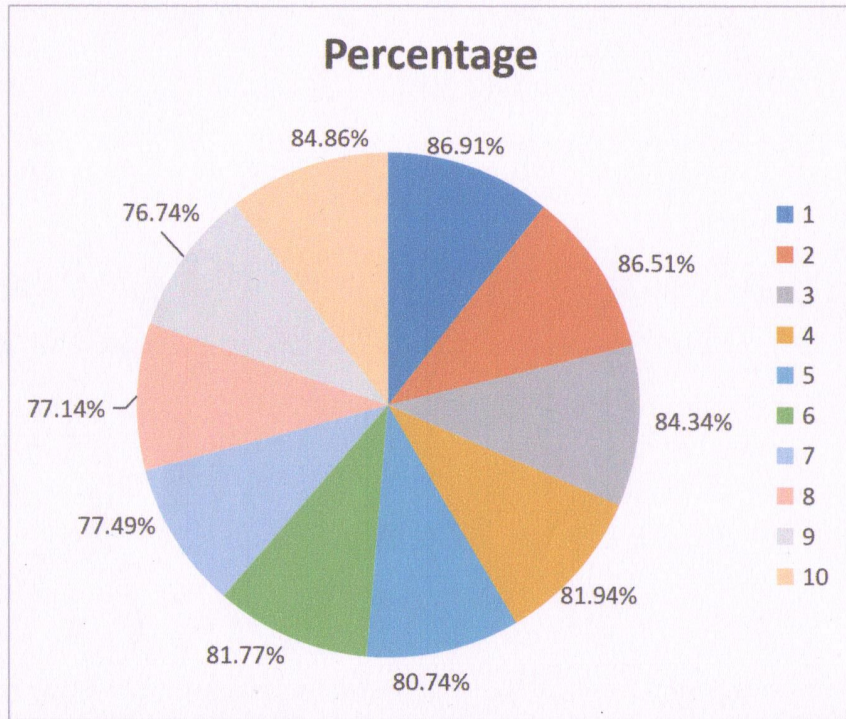
An ISO 9001:2015 Certified Institution.

Phone No: 04544- 246 500, 246501, 246502.

Website : [www.nprcolleges.org](http://www.nprcolleges.org), [www.nprcet.org](http://www.nprcet.org), Email: [nprcetprincipal@nprcolleges.org](mailto:nprcetprincipal@nprcolleges.org)



## ALUMNI FEEDBACK



Alumni Feedback From 10/01/2022 To 11/02/2022

